

AWARD-WINNING FLOORPLANS FOR EVERY BUDGET

# LOG HOME LIVING<sup>®</sup>

Plan, Build  
& Live  
Your Dream

CELEBRATING  
**25**  
YEARS

**23** Easy  
& Affordable  
Ways to Build  
a Dream Home

**SPECIAL  
SECTION:  
Dazzling  
Master  
Bedrooms**

**Our guide to creating  
a gorgeous hearth**

**How to design amazing storage  
space for kitchens & more**

**6 essential tips for choosing floors**

**VISIT A  
LOG HOME SHOW  
NEAR YOU  
PAGE 62**

Display Until December 24, 2007

FEBRUARY 2008 WEST REGION  
\$4.99US \$5.99CAN



www.loghomeliving.com

please recycle this magazine



home of the month

# Best of Both Worlds

**An Idaho log-and-timber beauty showcases an innovative design that blends seamlessly into the rugged mountain landscape.**

story by Holly Smith | photography by Roger Wade | styling by Deborah Grahl

## why we love it

Never underestimate the power of logs, timber and stone—especially as they work in concert with one another. This home's strength lies in its ability to connect to its setting, with natural hues inside and a wonderful selection of materials. Our favorite feature: the kitchen, a rich blend of functionality and elegance.

the rest of the story...  
[loghomeliving.com](http://loghomeliving.com)



A large, rustic living room with a stone fireplace, leather sofas, and wooden walls. The room features a high ceiling with exposed timber trusses and square, dovetailed logs on the walls. A large stone fireplace with a wooden mantel is the focal point, decorated with a large copper bowl and dried branches. Two brown leather sofas and a wooden coffee table are arranged in the room. Large windows provide a view of the outdoors.

home of the month

**NATURAL ELEMENTS:** A unique blend of wood features—square, dovetailed logs on the walls and timber trusses overhead—amplifies the allure of the great room. “Quite often, we’ll mix timber and logs,” says Tim Schafer, an architect with PrecisionCraft Log & Timber Homes, who designed the stunning home.



**GO WITH THE FLOW:** The great room and kitchen merge into a convivial space for family and friends. Natural hues offer an homage to the Idaho countryside and complement the rich texture of the Douglas fir logs.

## home of the month

**LOTS OF ELBOW ROOM:** Stainless steel appliances and streamlined lighting play chic supporting roles to the grand timbers enveloping the kitchen. Squared and distressed, the timber accents are a favorite flourish among family and guests.



## home of the month



**T**im Schafer doesn't climb mountains—he builds around them. As an architect, he finds ways to fit gloriously designed homes into spots where Mother Nature might have other ideas. Such was the case with a recent customer who wanted his 2,800-square-foot getaway home nestled into Idaho's Tamarack ski area.

"We were able to come up with a design without a lot of steps or level changes," says Tim, who works at Mountain Architects, the design firm for PrecisionCraft Log & Timber Homes. "It's kind of a long and narrow home because of the lot." But the house, known as Eagle's Nest, works wonderfully and looks as if it's been perched on this spot for more than a century.

Beau Value, owner and president of Everest Construction, says the owner of Eagle's Nest wanted the place to look like no other. Judging by the unique log-and-timber stunner that resulted, it's clear the customer got exactly what he wanted.

Working with a design and materials from PrecisionCraft, Beau and his team were able

to complete the four-bedroom, four-and-a-half-bathroom home in just 14 months, despite heavy snow during a particularly severe winter.

The pre-construction design process, though, took a little longer than usual.

"It was a difficult site to fit," says Beau of the home's sloping corner lot near a mountain switchback. "There's a road that goes by the site to access several homes at higher elevations, so we wanted to set the house on the slope. But we also wanted to protect the place so it felt private and not exposed to the road."

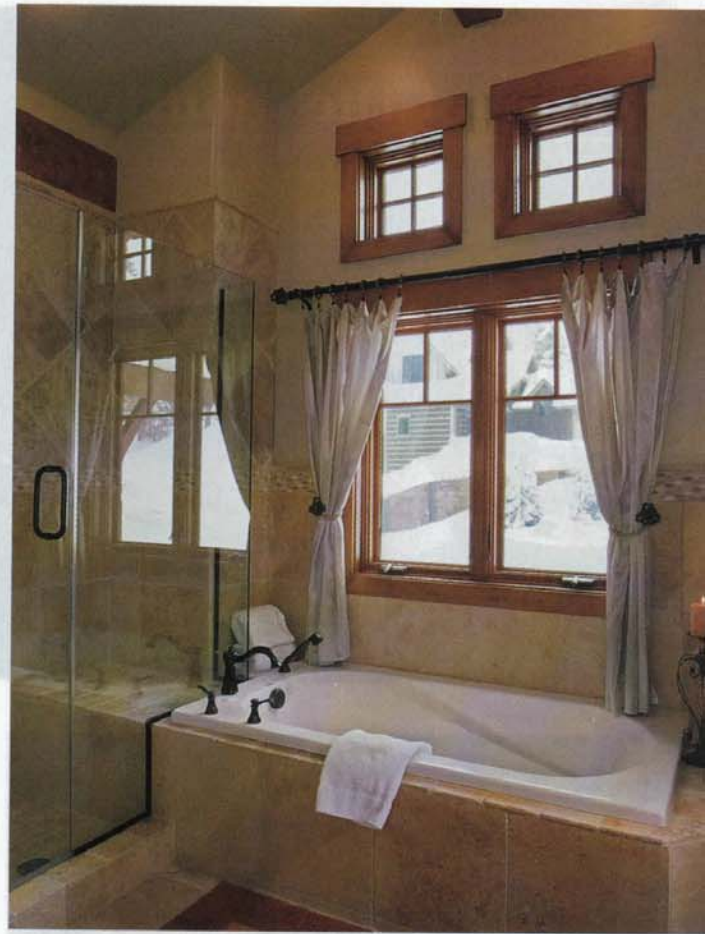
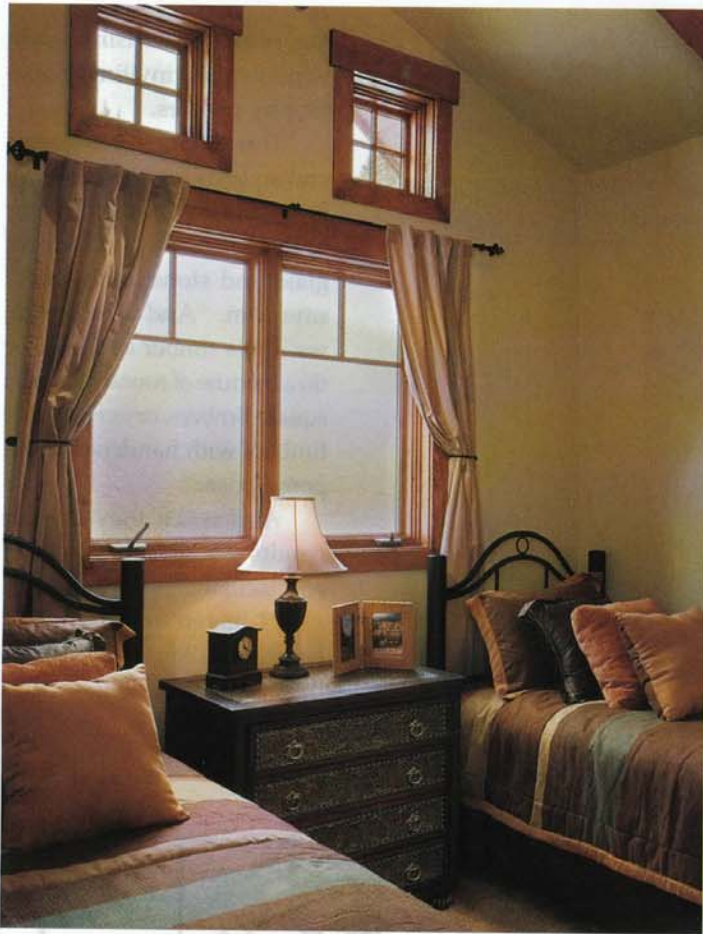
The solution, explains Tim, was to work with the challenging landscape, not against it. By adopting such a practical approach, they succeeded in tweaking one of PrecisionCraft's standard layouts, the Eagle's Nest plan from their Western Log & Timber series, to accommodate the site.

The home is equally striking inside, combining all the rustic beauty of heavily adzed, square Douglas fir logs with the elegance of squared timbers. Adding to the eclectic look, the place also boasts natural stone inside and out, vertical board-and-batten exterior sid-

**NATURAL COMFORT (CLOCKWISE FROM ABOVE):** Upscale yet understated, the furnishings in the home's bedrooms complement—rather than compete with—the sophisticated timber accents surrounding them. Intentionally left muted, the colors on the walls and ceilings allow the wood to shine.

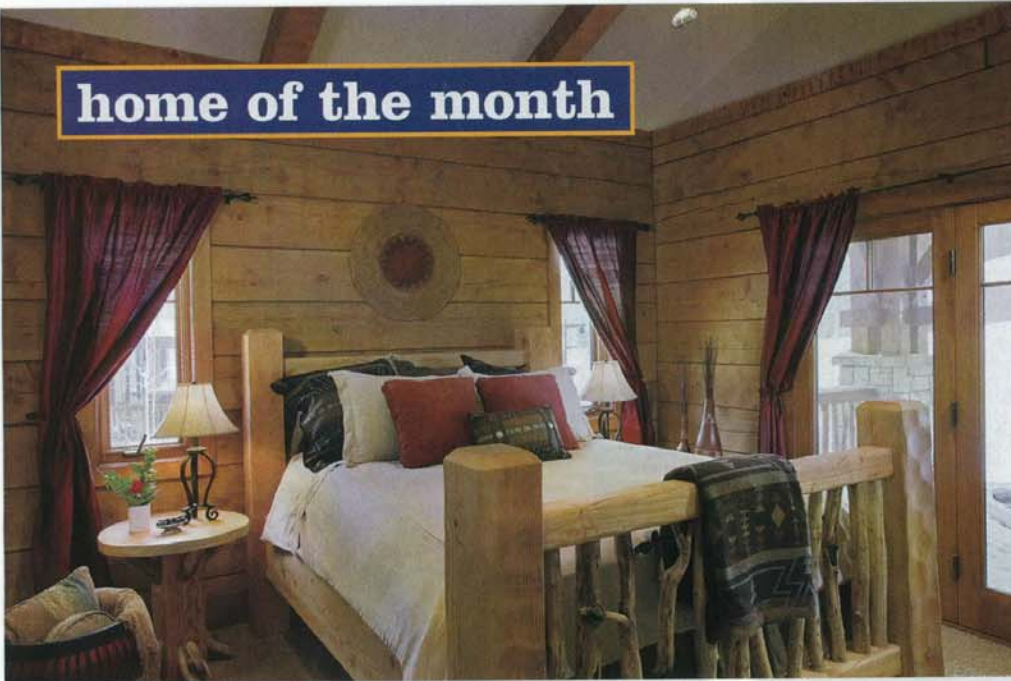
**DIVINE SOAK:** Timber takes center stage even in a bathroom, where its earthy glamour brings a dose of the outdoors to the otherwise cosmopolitan space. A soaking tub and separate shower and prove that practical and posh needn't be mutually exclusive.

**TIMBER HIDEAWAY:** Nowhere do the Douglas fir trusses appear more striking than from the loft. Seeming to frame the natural-stone fireplace and angular windows across the great room, the timbers—all heavily adzed—bring an additional dash of grandeur to an already magnificent space.





## home of the month



ing, plentiful Craftsman-style windows and inviting, guest-worthy porches.

This mélange of materials and styles is fairly typical in a PrecisionCraft home. "We try to incorporate a good mix of glass and stone and wood," says Tim. "And quite often, we'll mix timber and logs, or do a mixture of round logs with square timbers, or even square timbers with handcrafted, tapered posts."

And when they do, the results are nothing short of spectacular.

"I haven't seen another home in the Tamarack area like this," says Beau. "It has such a nice, cozy feel." 🏠

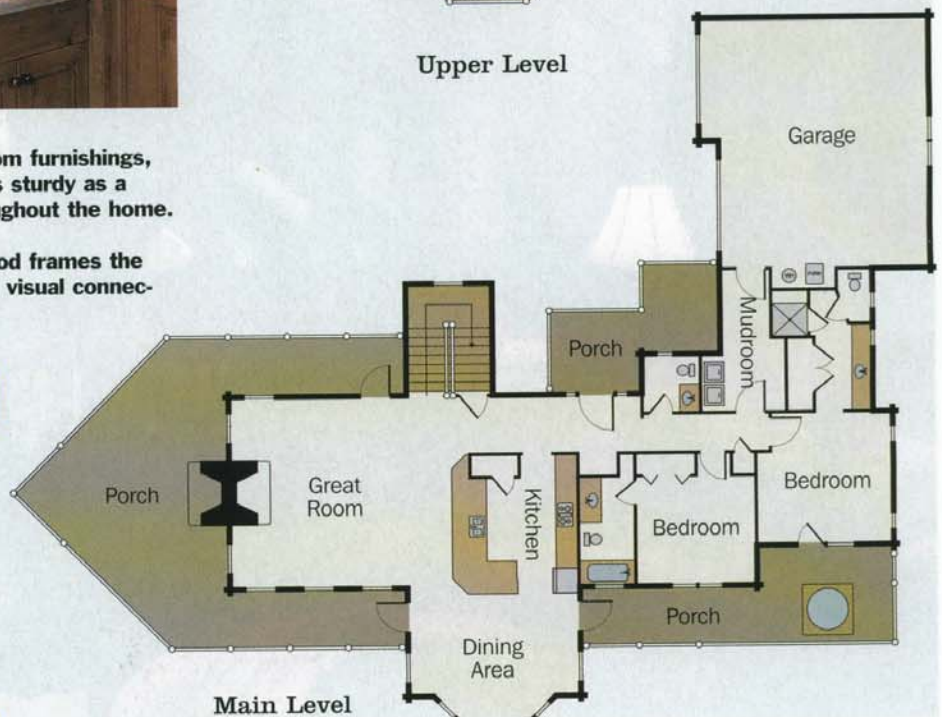


**COZY NIGHT'S REST (TOP):** Understated bedroom furnishings, including crimson window treatments and a bed as sturdy as a draft horse, match the rustic harmony found throughout the home.

**HINTS OF TIMBER (ABOVE):** Honey-colored wood frames the master bathroom's mirror and windows, offering a visual connection with the home's Douglas fir logs.



Upper Level



Main Level

## home details

**SQUARE FOOTAGE: 2,800**

**BUILDER: EVEREST CONSTRUCTION**

**LOG PROVIDER: PRECISIONCRAFT  
LOG & TIMBER HOMES**

**FOR MORE INFORMATION, SEE RESOURCES  
ON PAGE 89**

**STARGAZING WITH FLARE:** Porches figure prominently in this home, including this one, complete with an outdoor hearth. The double-sided fireplace—which also serves the great room—provides abundant warmth on wintry Idaho nights.

